

Communities' perspectives & participatory approaches

International Conference
“Agrobiodiversity to manage risks and empower the poor”

Rome, Italy, 27-29 April 2015

Silvana Maselli, Ph.D.
Biology Department/CEAA
Universidad del Valle de Guatemala
smdes@uvg.edu.gt





Tratado internacional

SOBRE LOS RECURSOS FITOGENÉTICOS PARA LA ALIMENTACIÓN Y LA AGRICULTURA

Establishment of a preliminary network of Community Seed Banks in vulnerable regions of Guatemala, to provide seeds in the event of natural disaster

Silvana Maselli, Ph.D.
Biology Department
Universidad del Valle de Guatemala
smdes@uvg.edu.gt



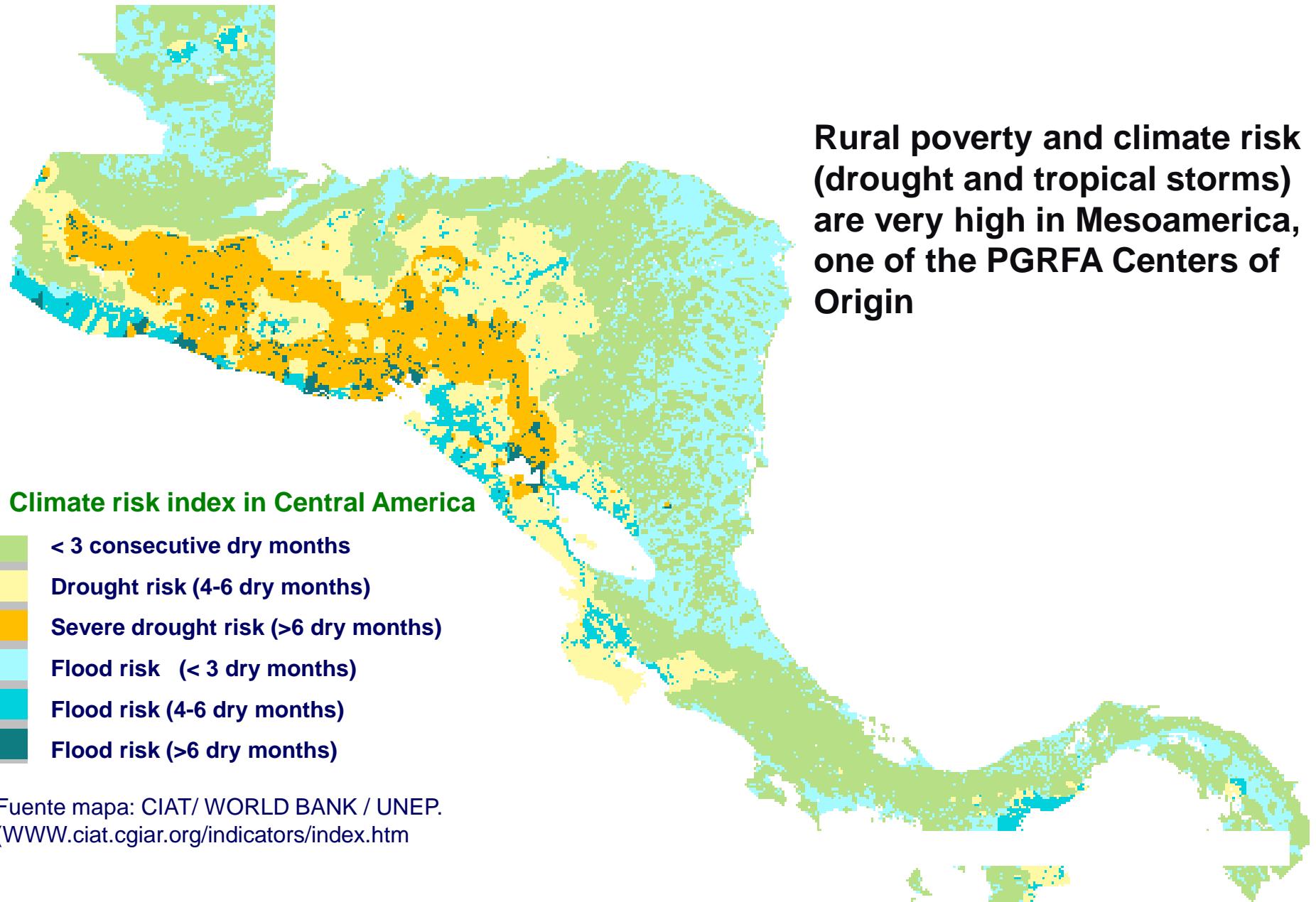
FUNDACIÓN
Manos de Amor



PROJECT'S OBJECTIVES

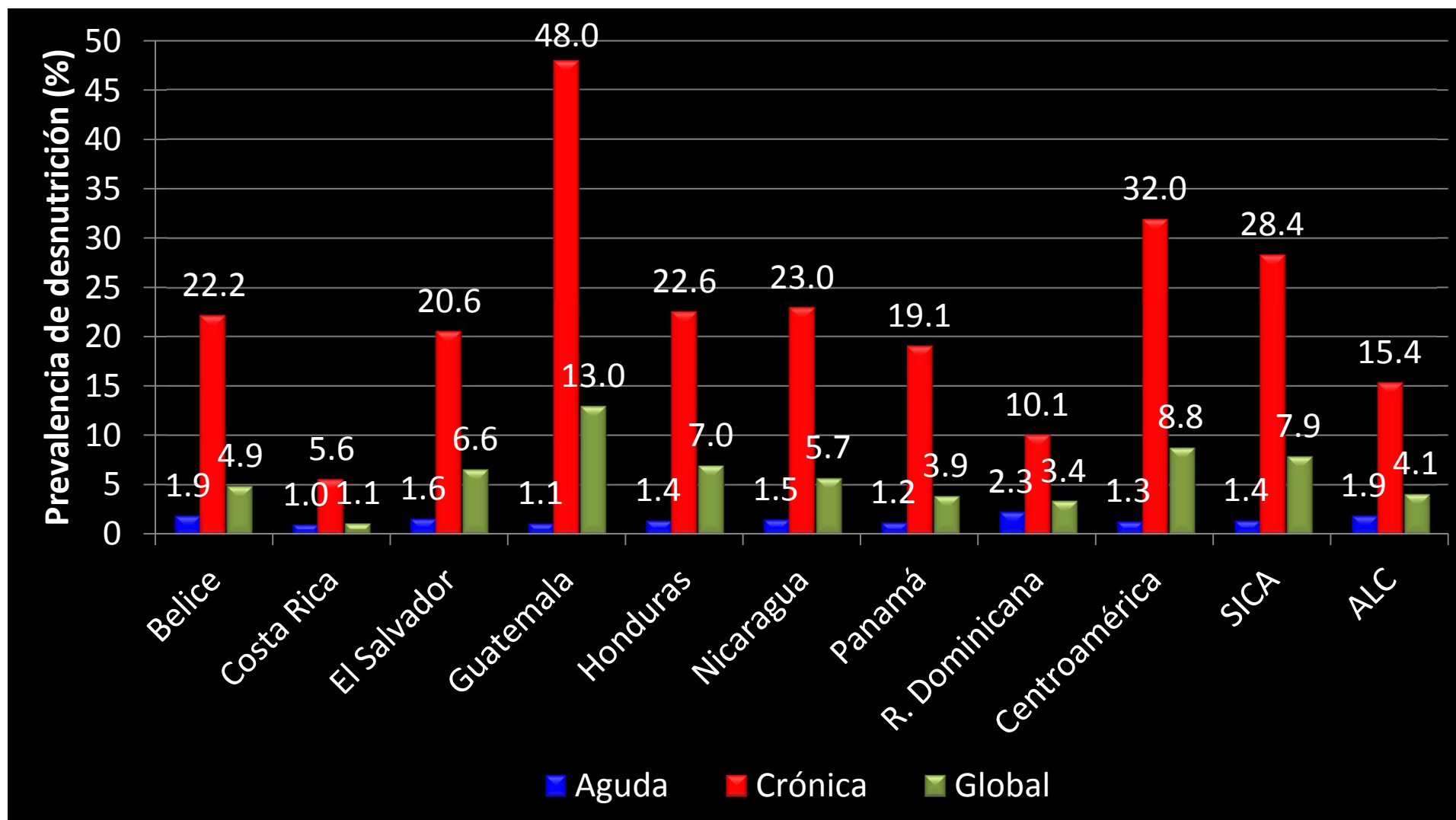
- 1. Identify and document the maize and beans diversity present in the farmers' fields in food security vulnerable areas.**
- 2. To establish Communal Seed Banks, with the selected species in the identified areas.**
- 3. Build capacity and transfer technology on how to manage seeds in CSB, and on native agrobiodiversity conservation.**
- 4. To establish the Communal organizational basis for Bank's functioning and Bank's sustainability in the areas covered by the project.**

PROJECT'S IMPACT ON FOOD SECURITY

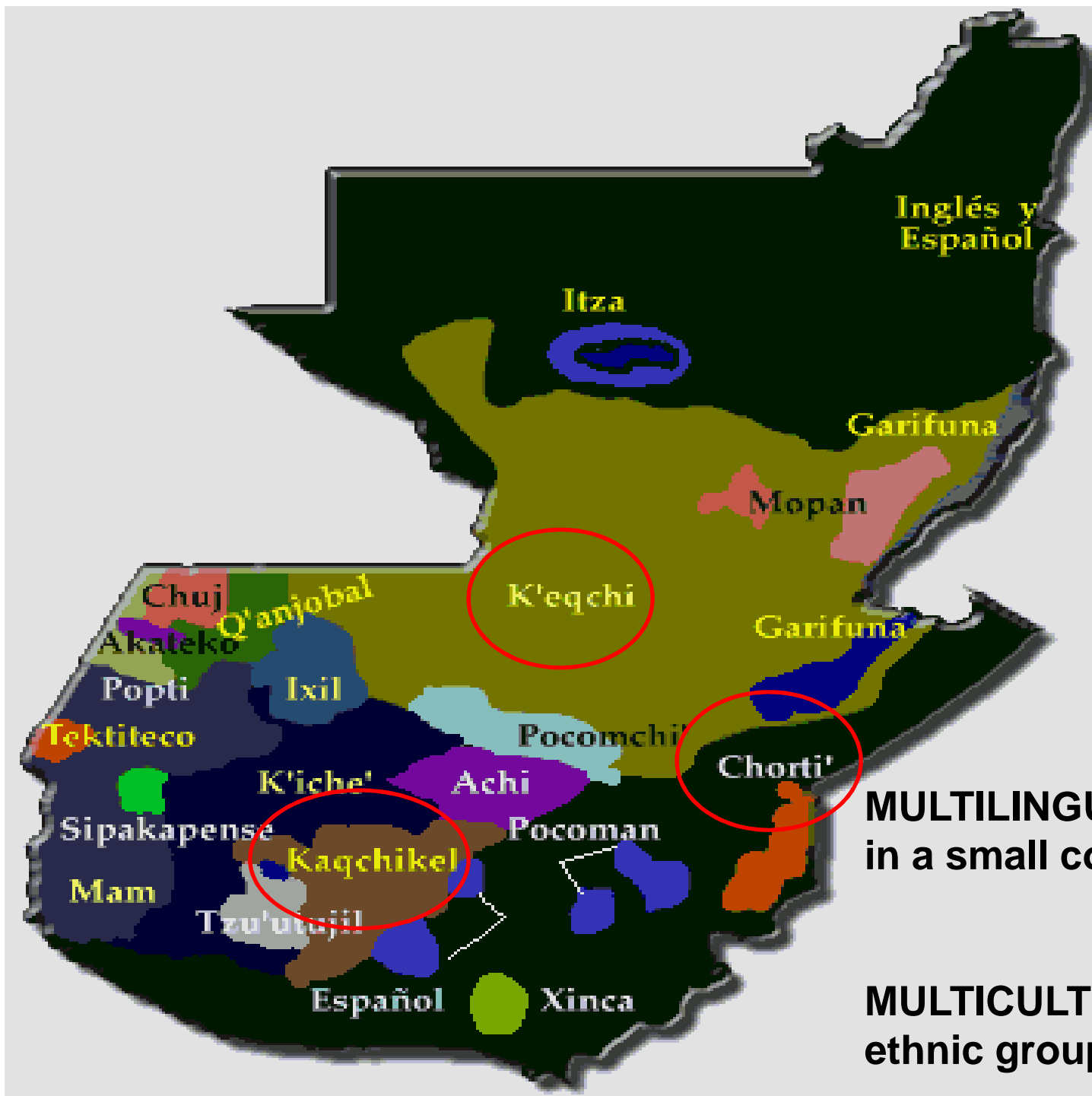


Fuente mapa: CIAT/ WORLD BANK / UNEP.
(WWW.ciat.cgiar.org/indicators/index.htm)

MALNUTRITION



Fuente: elaboración propia a partir de datos de desnutrición del "Global Health Observatory Data Repository" de la OMS (años 2006-12 según país), ENDESA Honduras 2001-12 y tasas brutas de natalidad de CEPALSTAT.

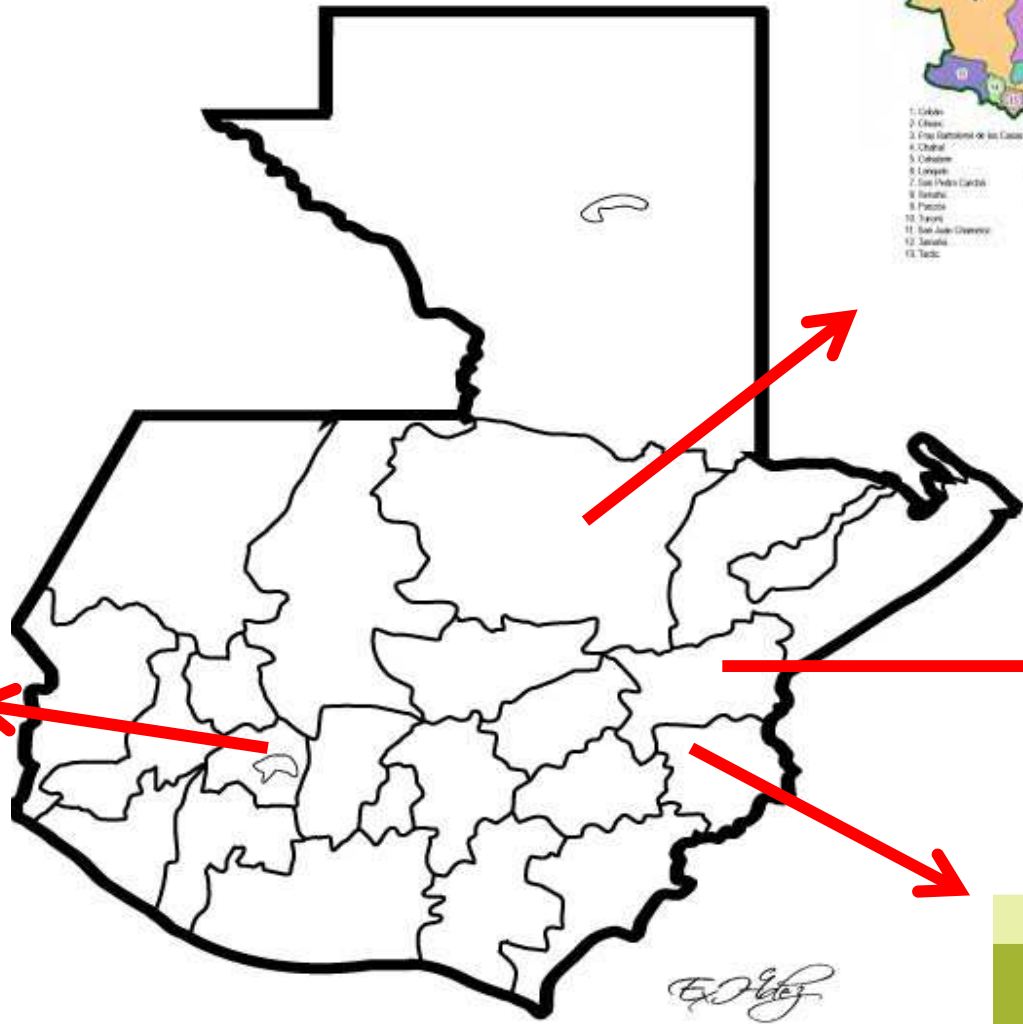


MULTILINGUAL: 21 dialects in a small country 108,889 Km²

MULTICULTURAL: 25 different ethnic groups

PROJECT'S COVERAGE

Guatemala



Alta Verapaz

1. Cobán
2. Chichán
3. Finca Barroilón de las Casas
4. Chahal
5. Cobante
6. Lanquán
7. San Pedro Carchá
8. Barahún
9. Proccán
10. Sayre
11. San Juan Chimmil
12. Sanahuá
13. Tactic
14. Santa Cruz Itz'ampal
15. San Cristóbal Itz'ampal
16. Itz'abal Colón La Tola, segregado administrativamente de Patzún pero no se ha publicado sus límites definitivos
17. Sacubul, segregado en Patzún por decreto 10 2008 del Congreso de la República, se están estableciendo sus límites definitivos.

Zacapa

1. Quatán
2. La Unión
3. Zacapa
4. Río Hondo
5. Estanzuela
6. Teculután
7. Usumatlán
8. Huab
9. Cabañas
10. San Diego

Sololá

1. Nahuatá
2. Santa Clara La Laguna
3. Santa María Visitación
4. San Juan La Laguna
5. San Pedro La Laguna
6. Santiago Atitlán
7. San Lucas Totmáán
8. San Antonio Palopó
9. Santa Catalina Itz'ampal
10. San Andrés Semetabaj
11. Panajachel
12. Concepción
13. Sololá
14. Santa Cruz La Laguna
15. San Marcos La Laguna
16. San Pablo La Laguna
17. Santa Catalina Palopó
18. Santa Lucía Utatlán
19. San José Chacayá
- L. Lago de Atitlán

Chiquimula

1. Chiquimula
2. Jocotán
3. Camotán
4. Esquevivas
5. Olopa
6. San Juan La Ermita
7. San José La Arada
8. San Jacinto
9. Itz'abal
10. Chetz'atzepeque
11. Concepción Las Minas

ESD



VILLAGES IN ALTA VERAPAZ



INTERNATIONAL PROJECT'S RESULTS PRESENTATIONS



Global Forum for Food and Agriculture in Germany

10th anniversary of the International Treaty coming into force in Switzerland.



SUCCESS STORIES:

Participation and institutional coordination



Tratado internacional

SOBRE LOS RECURSOS FITOGENÉTICOS PARA LA ALIMENTACIÓN Y LA AGRICULTURA



F U N D A C I Ó N
Manos de Amor

PARTICIPATION AND INSTITUTIONAL COORDINATION



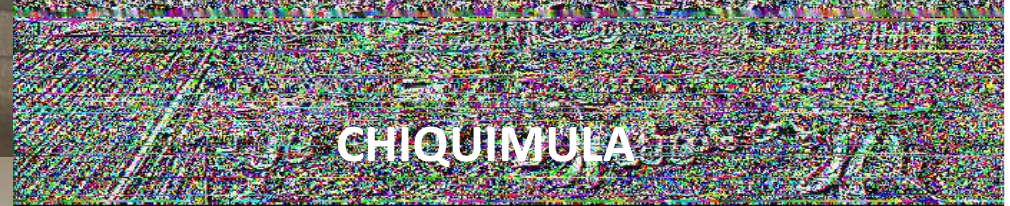
TECHNICAL SUPPORT AND ASSISTANCE FROM MAIN INSTITUTION'S PERSONNEL



- First contact with groups and local Institutions
- Identification of farmers
- Visits to farmer's plots
- Participation in workshops and project's coordination and activities
- Transportation



SOLOLA



CHIQUIMULA

ZACAPA



SESALTUL



RIO SAN JOSE

Communal organizational base has been strengthened through the conformation of Bank's Committees in 5 Areas

GENDER PARTICIPATION IN THE PROJECT

90-95% WOMEN



SOLOLA



CHIQUIMULA

ALTA VERAPAZ



98% MEN

ZACAPA



70% MEN 30% WOMEN

FIVE COMMUNAL SEED BANKS WERE ESTABLISHED



CHIQUIMULA

ZACAPA



SESALTUL

SOLOLA



RIO SAN JOSE



EACH COMMUNITY CHOSE THEIR MAIN MAIZE AND BEANS LAND RACES TO STORE IN THE SILOS

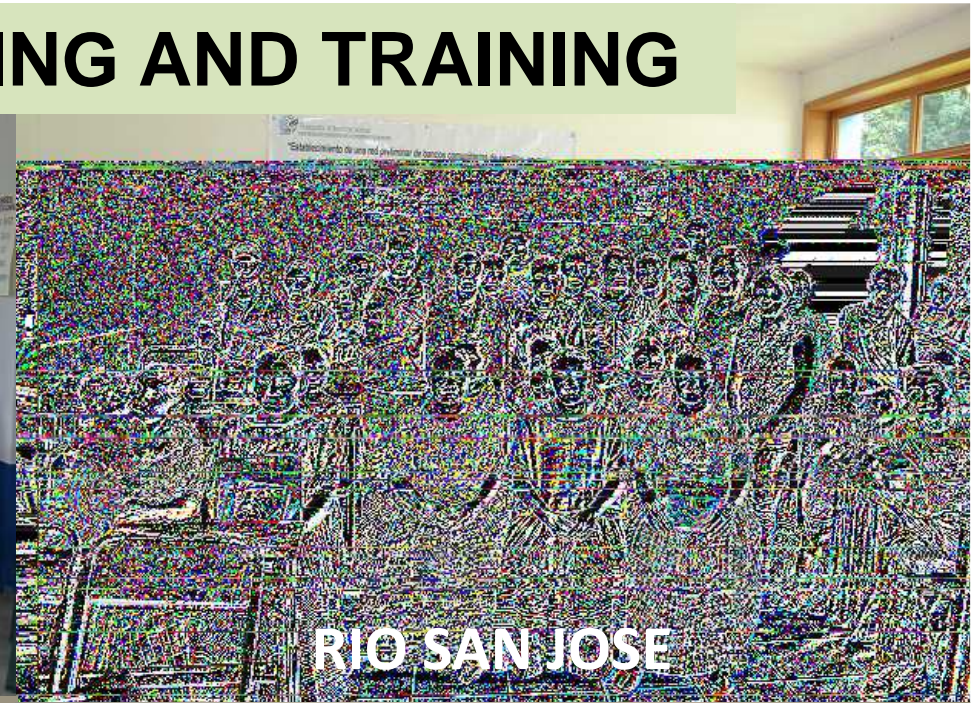
GERMINATION AND HUMIDITY TESTS WERE CARRIED OUT AT UVG AND FARMER'S FIELDS TO ASSESS SEED QUALITY, ONCE STORED.



CAPACITY BUILDING AND TRAINING



SESALTUL



RIO SAN JOSE



ZACAPA



CHIQUIMULA

WORKSHOP ON SEED MANAGEMENT, SEED QUALITY, SEED STORAGE





Tratado Internacional
CONVENIO INTERNACIONAL PARA LA CONSERVACION Y EL USO
DE LOS RECURSOS GENETICOS DE LAS PLANTAS PARA LA ALIMENTACION Y LA AGRICULTURA

MANUAL TÉCNICO OPERATIVO

<http://www.planttreaty.org/news/international-treaty-supports-guatemalan-farmers%E2%80%99-good-seed-practices>

PARA EL FUNCIONAMIENTO
Y MANEJO DE SEMILLAS EN



DIVERSITY LAB. PRACTICE





Tratado Internacional

SOBRE LOS RECURSOS FITOGENÉTICOS PARA LA ALIMENTACIÓN Y LA AGRICULTURA

NET OF CONSERVATIONIST FARMERS



**AGRICULTORES QUE
CONSERVAN *IN SITU*
LA DIVERSIDAD DE VARIEDADES
DE MAÍZ Y FRIJOL CRIOLLOS**



FUNDACIÓN
Manos de Amor



Agricultora: Elvira Adelina Torres

Proveedora de Semilla.

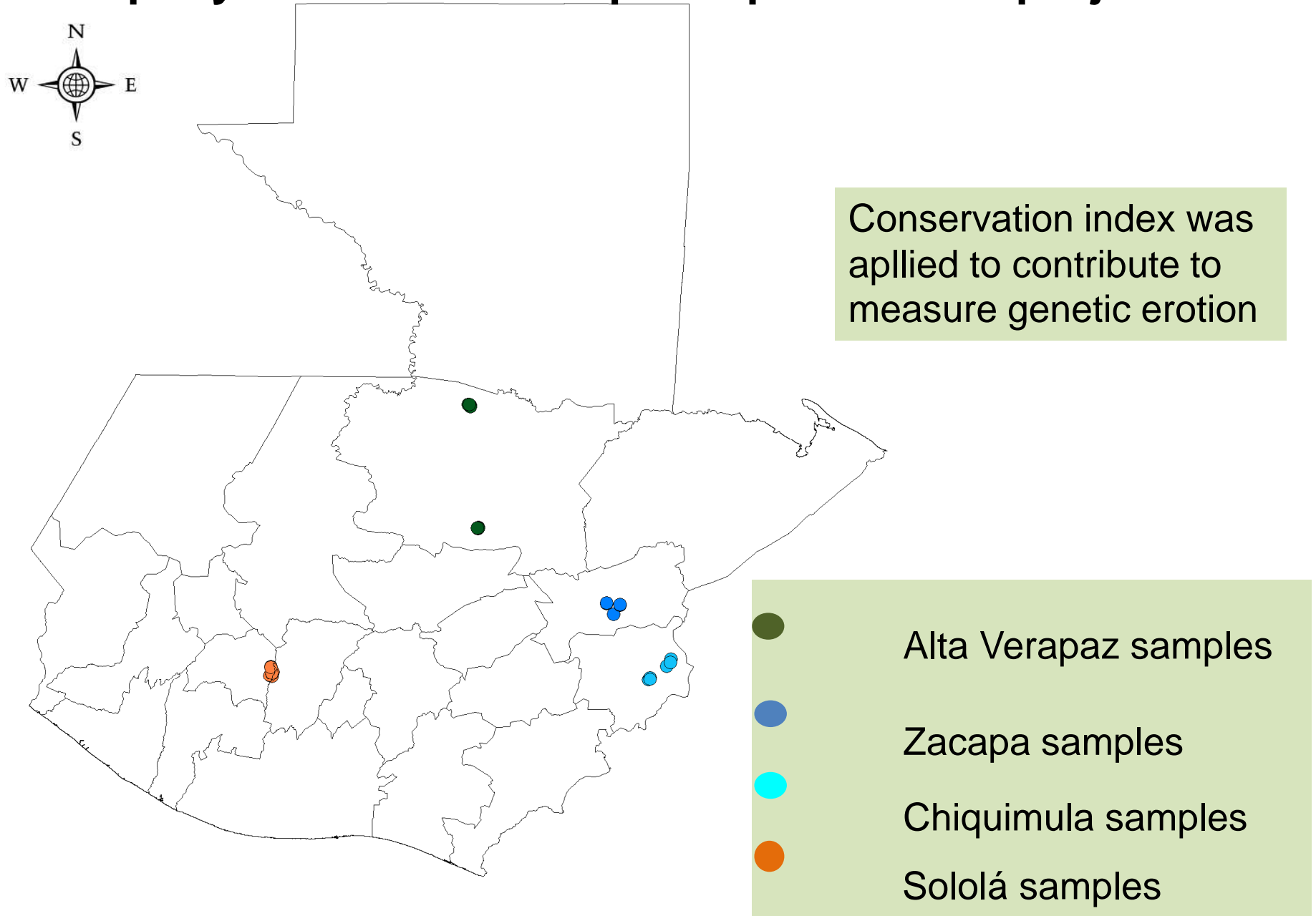
Río San José, Tukurú, Alta Verapaz



Cuadro 1. Variedades cultivadas por Elvira Adelina Torres, características de importancia y enfermedades que las afectan.

Variedades orollas que cultivan	Características de la variedad	Características ecogeográficas de las parcelas de cultivo	Cambios climáticos observados	Aumento o disminución de plagas y enfermedades en campo
Frijol Piboy	Buen sabor, ideal para cocinar tayuyos ¹ y con carne de cerdo.	<ul style="list-style-type: none">Altitud: 1201 msnmCoordenadas: Lat. 15.360437, Long. -90.130066ColinaSuelo: Tierra negraÁrea de siembra/cantidad de cosecha: 10 cuerdas/8qq²	<ul style="list-style-type: none">Cambios observados: Menos frío.Efectos observados: Debido a aque hay menos frío, ahora se puede sembrar más frijol.	<ul style="list-style-type: none">Disminución en coleópteros.

Geographical distribution of the maize and beans diversity kept by the farmers that participated in the project



PROJECTS IMPACT AND BENEFICIARIES



DIRECT BENEFICIARIES

- 27-30 farmers per area
- 5 areas = 135 farmers and their families
- (5-6 members per family) = 675 direct beneficiaries

INDIRECT BENEFICIARIES

Community members

Chiquimula: 635 families

Zacapa: 100 families

Sololá: 500 families

Alta Verapaz: 105 families

TOTAL. = 1,340 families

Project UVG-USDA FPP 10

Farmers, students and technical staff were trained on CSB establishment, Bank's seed's handling and agrobiodiversity conservation



27 students with hold UVG's scholarships were trained on how to manage the UVG's seed bank established with the UVG-USDA project.



**WORKING COLLECTION (MAIZE AND BEANS) FROM 16 COMMUNITIES
STORED AT UVG-ALTIPLANO SEED BANK IN SOLOLA**



EDUCATION AND CAPACITY BUILDING (SAP)



UVG STUDENTS HAVE PARTICIPATED IN PROJECT'S ACTIVITIES



COMMUNAL SEED BANKS SUSTAINABILITY



The link institution in each community and the CSB Committee will be in charge of the seed quality monitoring and the bank's activities.

- Working plan for seed distribution among Bank's partners.
- Map with climate vulnerable areas identified.
- Training knowledge was applied last year, during the heat wave, during the
- Rainy season in Chiquimula.

COMMUNAL SEED BANK'S SUSTAINABILITY



MAGA'S TECHNICIANS DESIGNATED TO WORK WITH THE COMMITTEES IN EACH OF THE FIVE AREAS



RECOMMENDATIONS FOR NEW PROJECT'S IMPLEMENTATION

1. Key Stakeholders selection:

- Include recognized link institutions
- Organized groups of farmers
- In Guatemala each ethnic group is different. Project's methods have to be adapted to the cultural environment.

2. Project's workplan and participation

- Trust is gained through activities executed and completed in the established times, even though farmers might not accomplish or participate in all activities.
- Capacity building and training is valued, but not as much as economic reimbursement for participating in a project.

3. Governmental institutions participation is a key factor for sustainability

THANK YOU FOR YOUR ATTENTION



**Xochela Village,
Tucurú, Alta Verapaz**